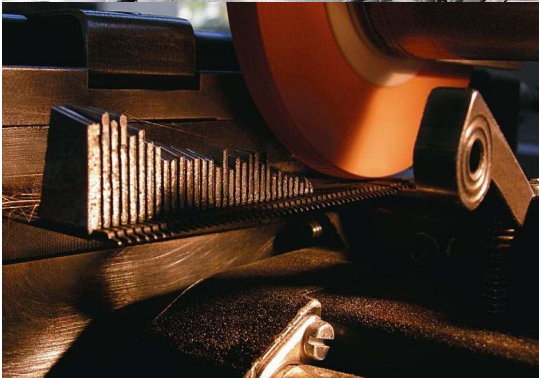
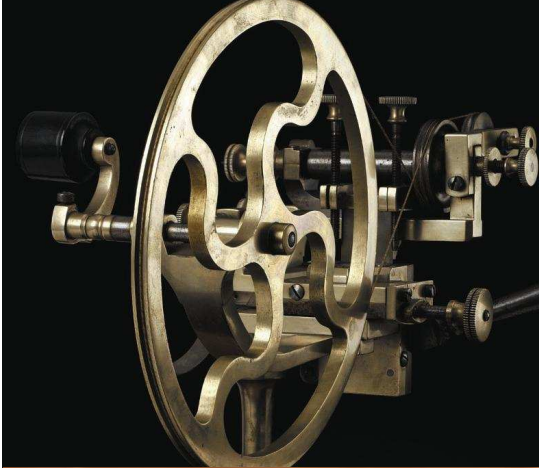


REUGE
THE ART OF MECHANICAL MUSIC

**NEW
PRODUCTS
2012**





STUDIO Collection

iReuge 1

LOUNGE Collection

La Poya 6

Speaker 9

The Wall 13

Monolith 17

nomad 21

Satori 37

1865 Collection

Debussy 41

Wagner 44

Swinging Heart 47

Cocoon 51

REUGE
THE ART OF MECHANICAL MUSIC

iReuge



iReuge



AXA.72.5380.

Numbered, limited edition of 25 pieces worldwide.

iReuge, a concept of music station for iPhone 4 and iPhone 4S.

Musical function: when your mobile phone vibrates, the iReuge musical movement starts to play music automatically whether for a call, a reminder or an alarm.

Charging function: when your mobile phone is placed on the iReuge platform, it automatically charges thanks to a clever induction system.

BOX

Base: black lacquered wood, gloss finish.

Upper part: Macassar ebony, gloss finish.

Protected by a bronze-coloured polished glass, with nickel-plated hinges.

Dimensions : 380 x 225 x 82 mm.

MOVEMENT

Nickel-plated movement, with blued screws. Base-plate decorated with *Côtes de Genève* engravings.

3 tunes of 36 seconds each. 72-note comb.

More than 1'200 pins per cylinder.

iReuge

TUNES

0011	March of the Toy Soldiers Waltz of the Flowers Dance of the Sugar Plum Fairy	P.I. Tchaïkovsky P.I. Tchaïkovsky P.I. Tchaïkovsky
0029	The Magic Flute (Glockenspiel) Eine kleine Nachtmusik (Minuet) Turkish March	W.A. Mozart W.A. Mozart W.A. Mozart
0044	Canon (3 parts)	J. Pachelbel
0088	Polonaise (Till the End of Time) Tristesse Impromptu	F. Chopin F. Chopin F. Chopin
0697	Lyric Waltz (Jazz-Suite 2) Waltz N°1 (Jazz-Suite 2) Waltz N°2 (Jazz-Suite 2)	D. Chostakovitch D. Chostakovitch D. Chostakovitch
0698	Solveig's Song (Peer Gynt-Suite 2) Anitra's Dance (Peer Gynt-Suite 1) In der Halle des Bergkönigs	E. Grieg E. Grieg E. Grieg
0701	Hungarian Dance N°1 Hungarian Dance N°19 Hungarian Dance N°5	J. Brahms J. Brahms J. Brahms
0707	Autumn Leaves What a Wonderful World Summertime	R. Williams L. Armstrong G. Gershwin
0708	Children's Song (3 parts)	Chick Corea
0709	Guantanamera Chan Chan Quizas, quizas, quizas	J. Fernandez Diaz C. Segundo Q. Farres
0731	Should I stay or should I go (3 parts)	The Clash
0736	The Wall Smoke on the water Imagine	Pink Floyd Deep Purple John Lennon

iReuge

A World Première

The first mechanical music station for mobile phones.

iReuge creates a **link between unique age-old know-how and cutting-edge technologies.**

A technical achievement

The electronic module required one year of development to achieve the objectives:

- the musical mechanical movement is activated and **plays music once a mobile phone starts to vibrate**, whether it is a call, message or alarm.
- an innovative **induction system** transmits the energy required **to charge a mobile phone.**

With a **multi-disciplinary team** composed of craftsmen, designers, master cabinetmakers, electronic engineers, Reuge succeeded in meeting this technological challenge.

Composed of **trendy woods** iReuge combines the modernity of black lacquer with the nobleness of Macassar ebony, enhanced by bronze-coloured polished glass.

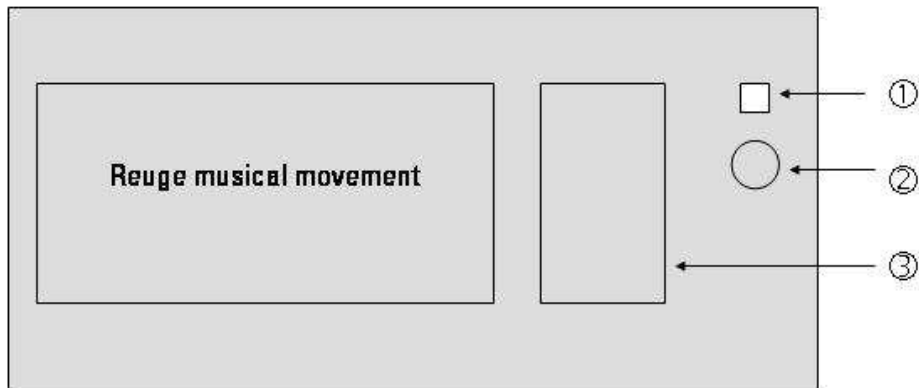
The nickel-plated 72-note movement brings subtle light and shades to this musical movement that requires **3 months of accumulated work.**

iReuge musical movement is a must:

- the speed-governor that regulates the movement is running to 3'400 revolutions per minute.
- the movement is composed of more than 80 parts.
- the cylinder contains more than 1'200 pins.

iReuge

How does it works ?



- ① The **luminous marker** indicates if iReuge is in "charging" function or "musical" function
- ② The **sensory key** allows to choose the functions of iReuge
- ③ The **charging zone** indicates where to place your iPhone on the iReuge

To start:

- 1 - Put the interrupter in "on" position. The luminous marker is green and flickers.
- 2 - Connect the electric cable to your iReuge in order to charge the battery. When the battery is fully charged the luminous marker stop to flicker.

How to use the musical function ?

- 1 - Put your iPhone in « vibrate » function.
- 2 - Place it on its iReuge charging zone.
- 3 - When your iPhone will vibrate (when a call, or a reminder, or to wake up in the morning), an electronic detector will automatically release the mechanical movement of your musical iReuge.
- 4 - If you do not stop your iPhone, the luminous marker will become blue after ten seconds, indicating that you had a call.

If you want to cancel the missed calls, push the sensory key and the luminous marker will become green again.

How to charge your iPhone ?

- 1 - Attach the included Powermat Receiver Case to your iPhone
- 2 - Set it down on your iReuge charging zone
- 3 - Push the sensory key and the luminous marker will become orange for a few seconds, then red. The red colour means that iReuge is charging your iPhone. The display of your iPhone also indicates that it is currently charging. When your iPhone is fully charged the luminous marker becomes green.
- 4 - To stop to charge, push again the sensory key, or remove your iPhone from its iReuge charging zone. The luminous marker will become green.

REUGE
THE ART OF MECHANICAL MUSIC

LA POYA



LA POYA

AXA.72.5872.000

BOX

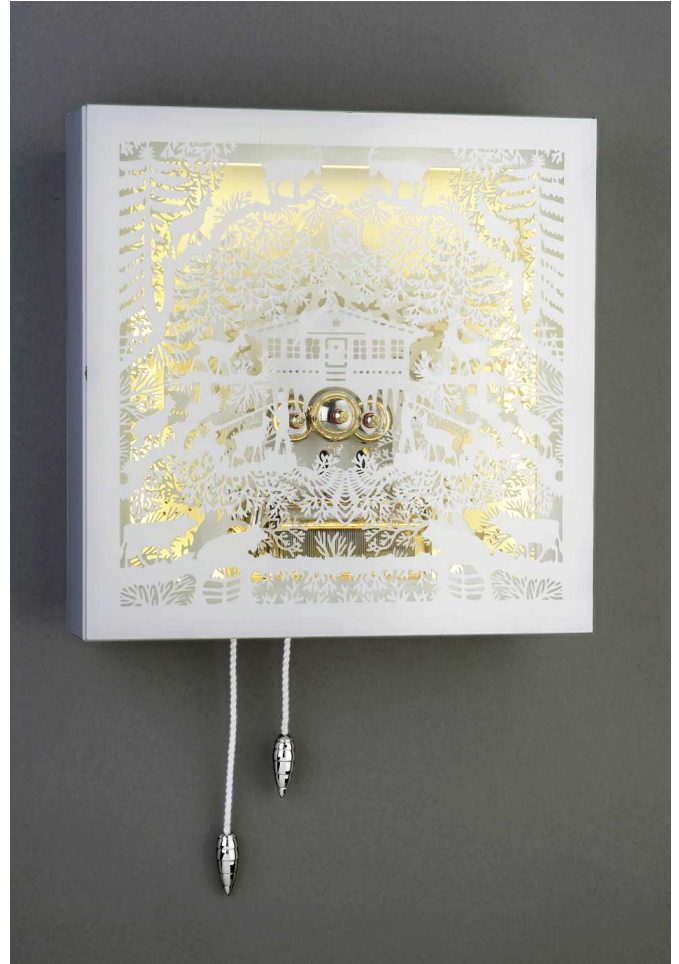
White lacquered wood frame, gloss finish.
White lacquered metal panels, cut laser, based on La Poya topic.
Protected by a glass with La Poya decorations applied. Nickel-plated hinges.
LEDs light automatically when the music starts and stop when the music stop.
Dimensions: 400 x 400 x 128 mm

MOVEMENT

Nickel-plated movement CH 3.72 with three bells.
3 tunes of 36 seconds each.
72-note comb.
More than 1'200 pins per cylinder.

TUNES

0634	March of the Toy Soldiers	P.I. Tchaïkovsky
	Sleeping Beauty	P.I. Tchaïkovsky
	Waltz of the Soldiers	P.I. Tchaïkovsky



LA POYA

Reuge is launching a new product concept based on two new market segments:

- **wall** musical decorative items
- **illuminated** musical decorative items

What means “**La Poya**” ?

« La Poya » means in french language « the climbing » in high mountain pasture, the **transhumance in the Swiss Alps**. La Poya is still today an ancestral tradition, where Popular Art and farming meet together.

La Poya is also from 1800 a **painting style** that illustrates transhumance. Silvestre Pidoux (1800-1871) was one of the main La Poya painter.

La Poya by Reuge

La Poya is a frame that looks animated like a **Sound & Light theater** : music and light put on a pedestal four La Poya panels, that have been fixed one behind others in the main frame, ensuring depth of field and relief.

The perfect osmosis between:

- two bi-centenarian Swiss craftsmans and traditions : Mechanical Music and La Poya Art
- the modernity of white lacquer.

The mechanism to start the music has been **inspired by cuckoo clocks with two fir cones** that have been designed with modern inspirations.

Each bell of the mechanical movement is rung by a fine butterfly-shaped clapper. The 3 butterflies are made of founded brass. They are nickel-plated with polished finish.

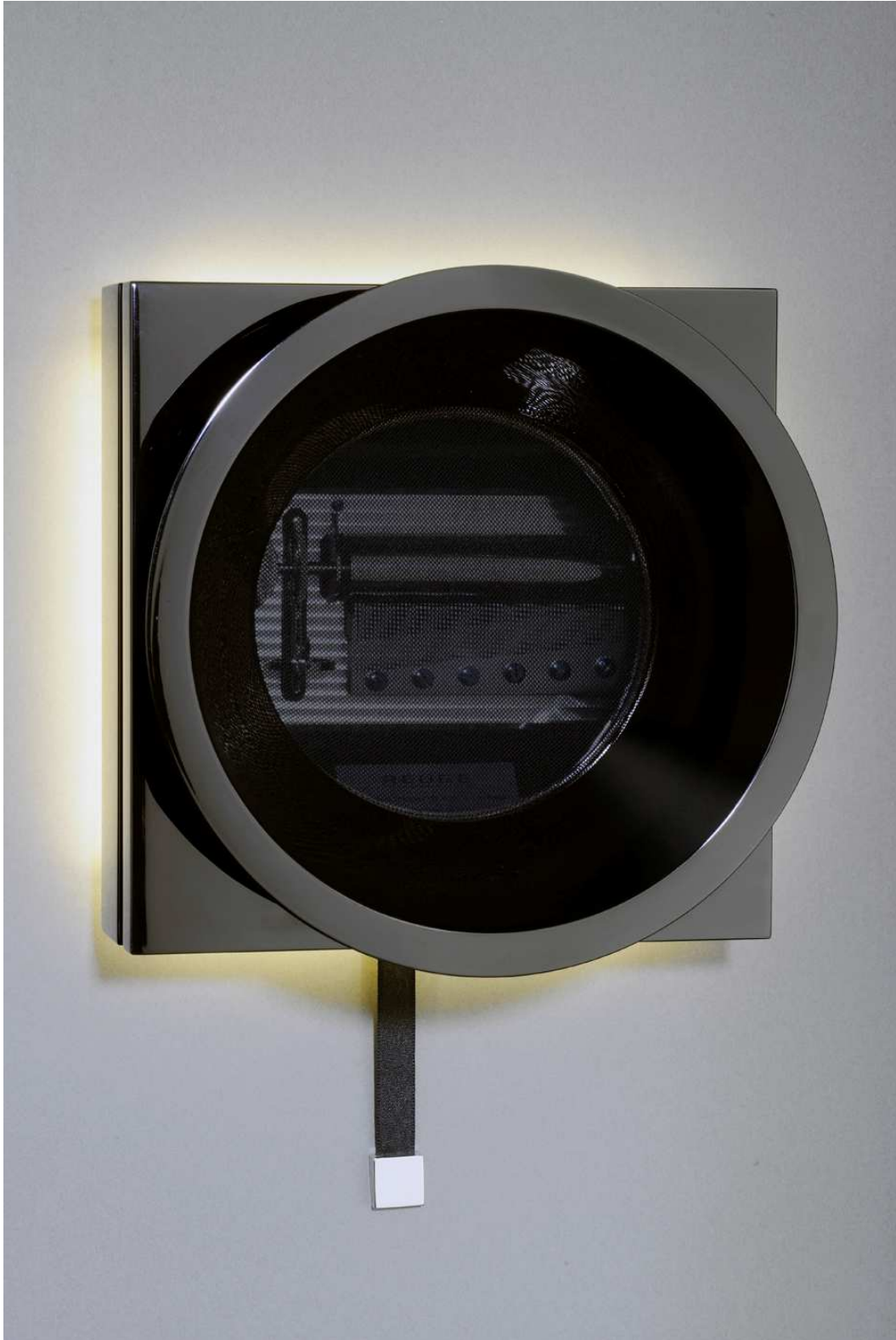
La Poya's movement is a technical sophistication :

- The speed-governor that regulates the movement runs at 3'400 revolution per minute.
- The movement as a large spring-barrel in order to optimize the power reserve.
- The movement is composed of 112 parts.

How to start music and light ?

- 1 - Put the on/off button in position 1 (under the frame).
- 2 - By pulling down the left polished fir cone the music automatically starts and lights switch on.
- 3 - By pulling down the right polished fir cone the music will stop at the end of the melody and lights will switch off.

SPEAKER



SPEAKER



AXA.72.5871.000

FRAME

Black lacquered wood, gloss finish.
Transparent black fabric in the middle.

LEDs light automatically when the music starts, and stop when the music stops.

Nickel-plated hinges.

Dimensions : 245 x 245 x 146 mm

A tune plate has been fixed in the frame indicating the 3 melodies.

MOVEMENT

Nickel-plated movement with blued screws. Base-plate decorated with *Côte de Genève* engravings.
3 tunes of 36 seconds each.

72-note comb.

More than 1'200 pins per cylinder.



AXA.72.5871.001

FRAME

White lacquered wood, gloss finish.
Transparent white fabric in the middle.

SPEAKER

TUNES

0011	March of the Toy Soldiers Waltz of the Flowers Dance of the Sugar Plum Fairy	P.I. Tchaïkovsky P.I. Tchaïkovsky P.I. Tchaïkovsky
0029	The Magic Flute (Glockenspiel) Eine kleine Nachtmusik (Minuet) Turkish March	W.A. Mozart W.A. Mozart W.A. Mozart
0044	Canon (3 parts)	J. Pachelbel
0088	Polonaise (Till the End of Time) Tristesse Impromptu	F. Chopin F. Chopin F. Chopin
0697	Lyric Waltz (Jazz-Suite 2) Waltz N°1 (Jazz-Suite 2) Waltz N°2 (Jazz-Suite 2)	D. Chostakovitch D. Chostakovitch D. Chostakovitch
0698	Solveig's Song (Peer Gynt-Suite 2) Anitra's Dance (Peer Gynt-Suite 1) In der Halle des Bergkönigs	E. Grieg E. Grieg E. Grieg
0701	Hungarian Dance N°1 Hungarian Dance N°19 Hungarian Dance N°5	J. Brahms J. Brahms J. Brahms
0707	Autumn Leaves What a Wonderful World Summertime	R. Williams L. Armstrong G. Gershwin
0708	Children's Song (3 parts)	Chick Corea
0709	Guantanamera Chan Chan Quizas, quizas, quizas	J. Fernandez Diaz C. Segundo Q. Farres
0731	Should I stay or should I go (3 parts)	The Clash
0736	The Wall Smoke on the water Imagine	Pink Floyd Deep Purple John Lennon

SPEAKER

Reuge is launching a new product concept based on two new market segments:

- **wall** musical decorative items
- **illuminated** musical decorative items

***Speaker* is a abstract loudspeaker for mechanical music.**

It pays tribute to ancient gramophone revisited in a contemporary style, with a refined and geometrical approach.

The black lacquered wood version of *Speaker* is an ode to **discrete elegance** and refined tastes, whereas the white lacquered one is fully **inspired by 2012 decorative trends for Home**.

Speaker music is carefully preserved and protected behind a **subtile fabric** that invites to discover the mechanical movement to your eyes without totally revealing it.

Open *Speaker* door and you will contemplate a marvelous nickel-plated movement with luxury finishings: blued sreews, chamfered base-plate decorated with *Côtes de Genève* pattern.

How to start music and light ?

- 1 - Put the on/off button in position 1 (under the frame).
- 2 - Pull down the nickel-plated pull and the music automatically starts and lights switch on.
- 3 - Pull it down one more time and the music will stop at the end of the melody and lights will switch off.

REUGE
THE ART OF MECHANICAL MUSIC

THE WALL



THE WALL



AXA.72.5870.000

FRAME

Black lacquered wood, gloss finish.

Transparent glass provided with rummer.

LEDs light automatically when the music starts, and stop when the music stops.

Dimensions: 280 x 255 x 90 mm

MOVEMENT

Nickel-plated movement with blued screws. Base-plate decorated with *Côte de Genève* engravings.

3 tunes of 36 seconds each.

72-note comb.

More than 1'200 pins per cylinder.



AXA.72.5870.001

FRAME

White lacquered wood, gloss finish.

THE WALL

TUNES

0011	March of the Toy Soldiers Waltz of the Flowers Dance of the Sugar Plum Fairy	P.I. Tchaïkovsky P.I. Tchaïkovsky P.I. Tchaïkovsky
0029	The Magic Flute (Glockenspiel) Eine kleine Nachtmusik (Minuet) Turkish March	W.A. Mozart W.A. Mozart W.A. Mozart
0044	Canon (3 parts)	J. Pachelbel
0088	Polonaise (Till the End of Time) Tristesse Impromptu	F. Chopin F. Chopin F. Chopin
0697	Lyric Waltz (Jazz-Suite 2) Waltz N°1 (Jazz-Suite 2) Waltz N°2 (Jazz-Suite 2)	D. Chostakovitch D. Chostakovitch D. Chostakovitch
0698	Solveig's Song (Peer Gynt-Suite 2) Anitra's Dance (Peer Gynt-Suite 1) In der Halle des Bergkönigs	E. Grieg E. Grieg E. Grieg
0701	Hungarian Dance N°1 Hungarian Dance N°19 Hungarian Dance N°5	J. Brahms J. Brahms J. Brahms
0707	Autumn Leaves What a Wonderful World Summertime	R. Williams L. Armstrong G. Gershwin
0708	Children's Song (3 parts)	Chick Corea
0709	Guantanamera Chan Chan Quizas, quizas, quizas	J. Fernandez Diaz C. Segundo Q. Farres
0731	Should I stay or should I go (3 parts)	The Clash
0736	The Wall Smoke on the water Imagine	Pink Floyd Deep Purple John Lennon

THE WALL

Reuge is launching a new product concept based on two new market segments:

- **wall** musical decorative items
- **illuminated** musical decorative items

Reuge “thinks outside the box” and presents its most beautiful contemporary movement like a **Work of Art**. With *The Wall*, mechanical music now belongs to your **home decoration** and is no more hidden behind a lid.

The Wall vertical shape looks like an organ while its lateral shape is inspired by a horn. *The Wall* is an **ode to the very first sound diffuser-amplifier which was horn**. It aims in coming back to sound essence to better find its place in modern interiors.

The black lacquered wood version of *The Wall* is an ode to discrete elegance and refined tastes, whereas the white lacquered one is fully inspired by 2012 decorative trends for Home.

It has been designed **to optimize acoustic performances** thanks to its curved and open upper part.

Through the glass you will discover a marvelous nickel-plated movement with luxury finishings: blued screws, chamfered base-plate decorated with *Côtes de Genève* engravings.

How to start music and light ?

- 1 - Put the on/off button in position 1 (under the frame).
- 2 - Pull down the nickel-plated pull and the music automatically starts and lights switch on.
- 3 - Pull it down one more time the music will stop at the end of the melody and lights will switch off.

REUGE
THE ART OF MECHANICAL MUSIC

MONOLITH



MONOLITH



AXA.72.5645.000

BOX

Mahogany, satin finish.
Stainless steel horizontal lines inlaid.
One upper drawer with brown velvet, to store souvenirs.
One lower drawer that stores the musical movement.
To open both secret drawers push the front of the drawers.
Dimensions: 300 x 190 x 183 mm

MOVEMENT

Nickel-plated movement with blued screws. Base-plate decorated with *Côte de Genève* engravings.
3 tunes of 36 seconds each.
72-note comb.
More than 1'200 pins per cylinder.

MONOLITH

TUNES

0011	March of the Toy Soldiers Waltz of the Flowers Dance of the Sugar Plum Fairy	P.I. Tchaïkovsky P.I. Tchaïkovsky P.I. Tchaïkovsky
0029	The Magic Flute (Glockenspiel) Eine kleine Nachtmusik (Minuet) Turkish March	W.A. Mozart W.A. Mozart W.A. Mozart
0044	Canon (3 parts)	J. Pachelbel
0088	Polonaise (Till the End of Time) Tristesse Impromptu	F. Chopin F. Chopin F. Chopin
0697	Lyric Waltz (Jazz-Suite 2) Waltz N°1 (Jazz-Suite 2) Waltz N°2 (Jazz-Suite 2)	D. Chostakovitch D. Chostakovitch D. Chostakovitch
0698	Solveig's Song (Peer Gynt-Suite 2) Anitra's Dance (Peer Gynt-Suite 1) In der Halle des Bergkönigs	E. Grieg E. Grieg E. Grieg
0701	Hungarian Dance N°1 Hungarian Dance N°19 Hungarian Dance N°5	J. Brahms J. Brahms J. Brahms
0707	Autumn Leaves What a Wonderful World Summertime	R. Williams L. Armstrong G. Gershwin
0708	Children's Song (3 parts)	Chick Corea
0709	Guantanamera Chan Chan Quizas, quizas, quizas	J. Fernandez Diaz C. Segundo Q. Farres
0731	Should I stay or should I go (3 parts)	The Clash
0736	The Wall Smoke on the water Imagine	Pink Floyd Deep Purple John Lennon

MONOLITH

simple

modern

pure

geometrical perfection

balance of proportions

no compromise

Monolith is a **secret luxury item**. All faces of the music box seem identical, preventing from understanding where is the musical movement.

A Première for Reuge: the musical movement has been placed in a drawer of the box.

Mahogany is famous for its **nobility**. This precious and rare wood has warm shades from red to brown.

Open the secret drawer and you will discover a marvelous nickel-plated movement with luxury finishings: blued screws, chamfered base-plate decorated with *Côtes de Genève* engravings.

A large choice of **12 composers and compositions** is available.

REUGE
THE ART OF MECHANICAL MUSIC

nomad



Do you feel nomad ?

REUGE
THE ART OF MECHANICAL MUSIC

nomad



REUGE
THE ART OF MECHANICAL MUSIC

nomad



AXA.72.5030.000

BOX

Hemlock (American fir tree), crimson tinted, mat finish.

Upper part of the box provided with rummers.

Dimensions: 226 x 150 x 77 mm

A tune plate has been fixed under the box indicating the 3 melodies.

MOVEMENT

Changing movement CH 3.72.

3 tunes of 36 seconds each.

72-note comb.

More than 1'200 pins per cylinder.

REUGE
THE ART OF MECHANICAL MUSIC

nomad



REUGE
THE ART OF MECHANICAL MUSIC

nomad



nomad



AXA.72.5030.001

BOX

Hemlock, black tinted, mat finish.
Upper part of the box provided with rummers.
Dimensions: 226 x 150 x 77 mm

A tune plate has been fixed under the box indicating the 3 melodies.

MOVEMENT

Nickel-plated changing movement CH 3.72.
3 tunes of 36 seconds each.
72-note comb.
More than 1'200 pins per cylinder.



AXA.72.5030.002

BOX

Hemlock, white tinted, mat finish.

nomad

TUNES

0011	March of the Toy Soldiers Waltz of the Flowers Dance of the Sugar Plum Fairy	P.I. Tchaïkovsky P.I. Tchaïkovsky P.I. Tchaïkovsky
0029	The Magic Flute (Glockenspiel) Eine kleine Nachtmusik (Minuet) Turkish March	W.A. Mozart W.A. Mozart W.A. Mozart
0044	Canon (3 parts)	J. Pachelbel
0088	Polonaise (Till the End of Time) Tristesse Impromptu	F. Chopin F. Chopin F. Chopin
0091	Ave Maria Ave Maria Jesu, Joy of Man's Desiring	Ch. Gounod F. Schubert J. S. Bach
0697	Lyric Waltz (Jazz-Suite 2) Waltz N°1 (Jazz-Suite 2) Waltz N°2 (Jazz-Suite 2)	D. Chostakovitch D. Chostakovitch D. Chostakovitch
0698	Solveig's Song (Peer Gynt-Suite 2) Anitra's Dance (Peer Gynt-Suite 1) In der Halle des Bergkönigs	E. Grieg E. Grieg E. Grieg
0701	Hungarian Dance N°1 Hungarian Dance N°19 Hungarian Dance N°5	J. Brahms J. Brahms J. Brahms
0703	Love me Tender Strangers in the Night My Funny Valentine	E. Presley F. Sinatra N. Simone
0704	September-Am Flusse (Das Jahr) Allegro non troppo In meines Vaters Garten	F. Hensel-Mendelssohn C. Wieck-Schumann A. Mahler-Schindler

REUGE
THE ART OF MECHANICAL MUSIC

nomad



REUGE
THE ART OF MECHANICAL MUSIC

nomad



REUGE
THE ART OF MECHANICAL MUSIC

nomad



REUGE
THE ART OF MECHANICAL MUSIC

nomad



REUGE
THE ART OF MECHANICAL MUSIC

nomad



nomad



AXA.36.4070.000

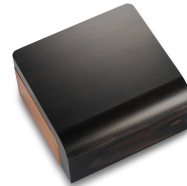
Upper part of the box: honey tinted

Lower part of the box: ashi black tinted



AXA.36.4070.001

Both parts of the box: russet-red tinted



AXA.36.4070.002

Upper part of the box: ashi black tinted

Lower part of the box: honey tinted



AXA.36.4070.003

Both parts of the box: honey tinted



AXA.36.4070.004

Both parts of the box: ashi black tinted

BOX

Hemlock (American fir tree), mat finish.

Upper part of the box provided with rummers.

Dimensions: 144 x 137 x 71 mm

A tune plate has been fixed under the box indicating the melodie.

MOVEMENT

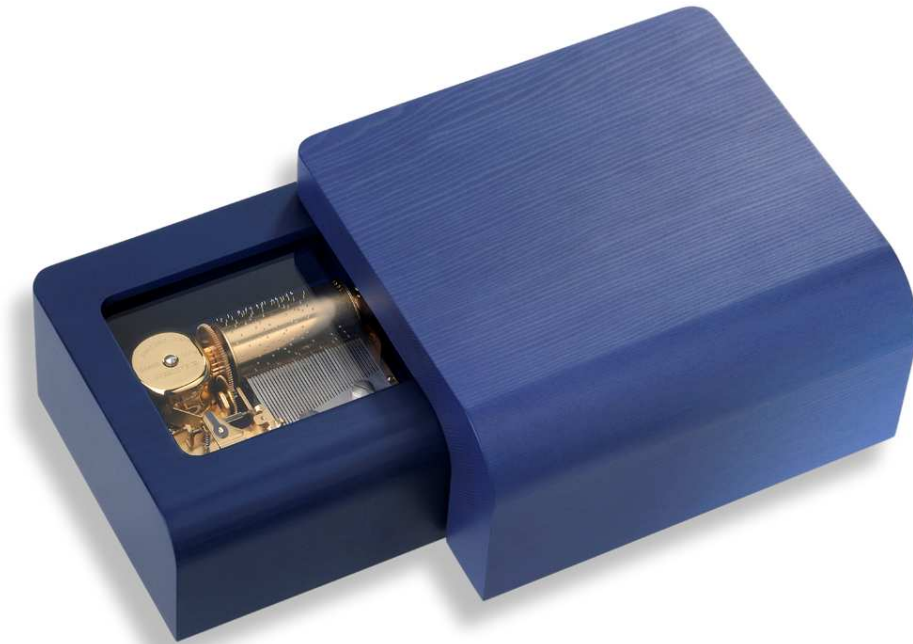
1.36 movement.

1 tune of 31 seconds.

36-note comb.

More than 200 pins per cylinder.

nomad
« cruise collection »



AXA.36.4070.005

Limited edition of 12 pieces worldwide

BOX

Hemlock (American fir tree), blue "Jean-Paul Gaultier" tinted, mat finish.
Upper part of the box provided with rummers.
Dimensions: 144 x 137 x 71 mm

A tune plate has been fixed under the box indicating the melodie, and stating the number in the limited edition.

MOVEMENT

1.36 movement.
1 tune of 31 seconds.
36-note comb.
More than 200 pins per cylinder.



nomad

TUNES

1738	Edelweiss	R. Rodgers
1855	The Magic Flute (Glockenspiel)	W. A. Mozart
1885	Waltz of the Flowers	P. I. Tchaïkovsky
1898	Canon	J. Pachelbel
1908	The Four Seasons	A. Vivaldi
1915	Cats (Memory)	A. L. Webber
2187	Waltz N°1 (Jazz-Suite 2)	D. Chostakovitch
2189	Solveig's Song (Peer Gynt-Suite 2)	E. Grieg
2192	Hungarian Dance N°1	J. Brahms
2202	Strangers in the Night	F. Sinatra

nomad

nomad alludes to a fetish object, evoking **moments of our lives**, especially linked with childhood sentiments. With *nomad* these precious experiences are **always with you**.

Like the **nomadic lifestyle** that symbolizes the ease by which we travel today, through many miles and time zones to the rhythm of their days, in-between city, sea and mountain, *nomad* embodies the concept of the **mobile music box**. Whether in your office, or your New York penthouse, or nestled in your chalet in the heart of the Alps, *nomad* is the privileged witness to the moments of your life.

It's **architectural shape** makes *nomad* not only a wonderful gift but also a beautiful piece of Art for any **interior design**.

nomad is bedecked in a richly sculpted case made of Hemlock, which radiates russet hues and a natural release of **subtle fragrances**.

In the spirit of the nomad's lifestyles, each piece comes with its own **travelling leather bag** allowing thus to move the music box easily from one place to another.

The 2012 *nomad* collection is available with a 72-note movement as well as a 36-note movement, and many tinted wood versions allowing to propose **nine combinaisons**.

A limited edition of only 12 pieces worldwide is now available. It has been developed for people who look for fashion decorative items. The concept is to launch twice a year a "*nomad Cruise Collection*" fully inspired by a famous Haute Couture Fashion Designer. For the first edition we decided to choose the iconic blue of **Jean-Paul Gaultier** Summer collection 2012.

SATORI



SATORI



SATORI



AXA.36.4860.000

PEBBLE

Solid oak. Oiled finish.
Dimensions: 183 x 113 x 57 mm

MOVEMENT

1.36 movement.
1 tune of 31 seconds.
36-note comb.
More than 200 pins per cylinder.

TUNES

1738 Edelweiss
1855 The Magic Flute (Glockenspiel)
1885 Waltz of the Flowers
1898 Canon
1908 The Four Seasons
1915 Cats (Memory)
2187 Waltz N°1 (Jazz-Suite 2)
2189 Solveig's Song (Peer Gynt-Suite 2)
2192 Hungarian Dance N°1
2202 Strangers in the Night

R. Rodgers
W. A. Mozart
P. I. Tchaïkovsky
J. Pachelbel
A. Vivaldi
A. L. Webber
D. Chostakovitch
E. Grieg
J. Brahms
F. Sinatra



AXA.36.4860.001

PEBBLE

Solid mahogany. Oiled finish.

SATORI

Reuge comes back to basics: nature, solid woods, vegetable oils.

Natural and ancestral material are strongly coming back in **Home decoration** spaces. Natural wood is now seen as a **subtile, authentic, trendy** material.

Satori is a Japanese term that means **enlightenment**. This term is usually used in Zen traditions and means **"seeing into one's true nature"**.

Zen attitude

Satori won't create miracles but will have an effect on your body and soul.

For thousands of years, people have used music to open their bodies to external influences. *Satori* works in a similar way and will calm, stimulate or harmonise your body with the environment.

Satori is an ideal accompaniment to wellness anywhere where you think mood is important: in the office, the living room, bedroom, in the bath,...

***Satori* arouses your senses :**

Hearing – with harmonious melodies enhanced by an **amazing acoustic**.

Smell – with its **subtile perfume** of vegetable oil.

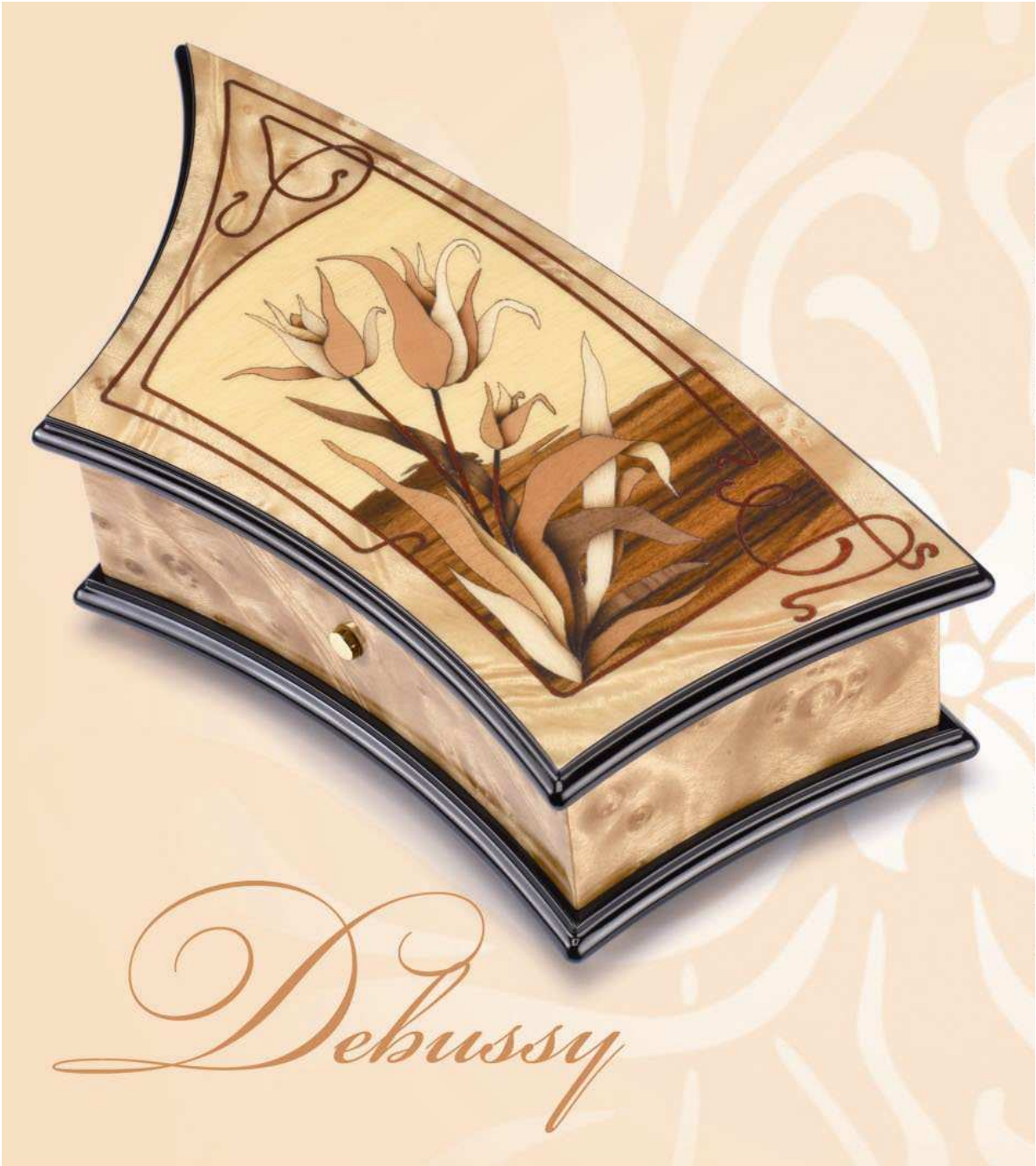
See – with the **proportions' perfection** of this pebble-shaped musical item.

Touch – with a **silky surface** due to perfect sanding and curved shapes.

A large choice of 10 melodies is available.

REUGE

THE ART OF MECHANICAL MUSIC



Debussy



AXA.72.5085.000

Limited edition of 99 pieces that pays tribute to 150th anniversary of Claude Debussy's birth.

BOX

Art Nouveau asymmetric box in burr myrtle. Gloss finish.
Art Nouveau inlay composed of tulips.
The typical Art Nouveau Whiplash motifs are inlaid in amaranth.
Dimensions: 347 x 160 x 81 mm

MOVEMENT

Changing movement CH 3.72.
3 tunes of 36 seconds each.
72-note comb.
More than 1'200 pins per cylinder.

TUNES

Petite Suite-Cortège	C. Debussy
Petite Suite-Minuet	C. Debussy
The girl with the flaxen hairs	C. Debussy

Debussy

A very **limited edition of 99 pieces** worldwide, *Debussy* music box is presented with a special certificate of authenticity.

The design of the box, a **Première** for a music box, was **inspired by Art Nouveau** furniture style, which was the prevailing furniture style during Debussy's life.

The asymmetric shape of *Debussy* box is a new appealing aesthetical universe that Reuge never developed.

10 precious woods were selected for the fine inlay, which is composed of **more than 50 wood pieces**.

At the beginning of 20th century Art Nouveau inlays were mainly composed of **wild flowers**, with ton on ton wood selections.

Debussy music box put on a pedestal a **specificity of Art Nouveau design: "whiplash"** which was frequently used by Art Nouveau artists. Such decorative "whiplash" motifs, formed by dynamic, undulating, and flowing lines in a syncopated rhythm, are found throughout the architecture, painting, sculpture, and other forms of Art Nouveau design.

A special **tune plate that has the same shape than the *Debussy* music box** indicates the tunes and the number in the limited edition.

The **golden brilliance of the movement** highlights the music makers' genius. The result of many years of development, the cylinder's perfection harks back to the golden age of mechanical music.

Included as a gift, a **CD of Claude Debussy famous opus** is offered to each final client.

Wagner



Wagner



AXA.72.5015.000

Limited edition of 99 pieces that pays tribute to 200th anniversary of Richard Wagner's birth.

BOX

Second Empire box in burr kingwood and rosewood. Gloss finish.

Typical Second Empire inlay composed of flowers, tapestry and threads in brass.

Dimensions: 282 x 170 x 90 mm

MOVEMENT

Changing movement CH 3.72.

3 tunes of 31 seconds each.

72-note comb.

More than 1'200 pins per cylinder.

TUNES

Die Meistersinger von Nürnberg

Die Walküre

Tannhäuser

R. Wagner

R. Wagner

R. Wagner

Wagner

A very **limited edition of 99 pieces** worldwide, *Wagner* music box is presented with a special certificate of authenticity.

Richard Wagner (1813-1883) was a German composer and conductor known for his operas.

Wagner's compositions, especially those of his later period are notable for their complex texture, rich harmonies, and the elaborate use of leitmotifs: musical theme associated with individual characters, places, ideas of plot elements. He also transformed operatic thought through his concept of the "total work of art".

The design of the box, was **inspired by Second Empire furniture style**, which was the prevailing furniture style during Wagner's life.

This new music box shape illustrates a **famous chest of drawers** from the renowned cabinet maker **Guillaume Grohé** in 1870.

Wagner music box has been done with two rare and precious woods : **kingwood and rosewood** that are used only for high-end furniture items.

The *Wagner* typical Second Empire tapestry **inlay is an achievement** :

- It is done by hand and is difficult to do as it combines rare **woods parts and brass parts**, that **are very small**.
- The lid of the box is composed of **849 pieces of wood and brass**.
- 10 precious woods were selected for the fine inlay.
- Sides of the box are decorated with brass inlay which is a typical feature of Second Empire furniture style.

A **special tune plate that has the same shape than the *Wagner* music box** indicates the tunes and the number in the limited edition.

3 new Richard Wagner tunes have been developed for this limited edition, chosen among the most famous Wagner operas.

When the 72 notes of a tune ring out on a traditional movement, the listener is hearing the magic of one hundred and fifty years of history.

Included as a gift, a CD of Richard Wagner famous opus is offered to each final client.

REUGE
THE ART OF MECHANICAL MUSIC

Swinging Heart



Swinging Heart



AXA.36.4045.000

BOX

Burr vavona. Inlay composed of roses, the symbol of Love.

Ring-holder that turns to the beat of the music when opening the music box.

One compartment for jewels.

Dimensions: 230 x 230 x 76 mm

MOVEMENT

1.36 movement.

1 tune of 31 seconds.

36-note comb.

More than 200 pins per cylinder.

Swinging Heart

TUNES

1738	Edelweiss	R. Rodgers
1855	The Magic Flute (Glockenspiel)	W. A. Mozart
1885	Waltz of the Flowers	P. I. Tchaïkovsky
1898	Canon	J. Pachelbel
1908	The Four Seasons	A. Vivaldi
1915	Cats (Memory)	A. L. Webber
2187	Waltz N°1 (Jazz-Suite 2)	D. Chostakovitch
2189	Solveig's Song (Peer Gynt-Suite 2)	E. Grieg
2192	Hungarian Dance N°1	J. Brahms
2202	Strangers in the Night	F. Sinatra

Swinging Heart

Let's talk about **Magic, Emotion and Love**

Reuge developed a **new heart-shaped ring-holder music box** dedicated to in love people.

Swinging Heart is the perfect **luxury gift** for men who will **declare their love**, or men who will **become engaged**.

When opening the music box, the music automatically starts to play and **the ring is turning to the beat of the music**. A true technical achievement.

The inlay, composed of **more than 35 wood pieces** is an ode to Love as it features **roses** which are the iconic **symbol of Love**.

This jewelry music box seems to come alive with rich wood colours, from red to brown. It is crafted in **burr vavona, a rare, precious Californian wood** used exclusively for high-end decorative objects. Burr vavona comes from Sequoia tree, also called California Redwood.

The most famous pieces by of Wolfgang Amadeus Mozart, Antonio Vivaldi or Frank Sinatra are recognizable from the very first few seconds that the pins have begun to activate the comb notes.

Cocoon



Cocoon



AXA.36.2719.000

BOX

Pebble-shaped transparent paperweight
Dimensions: 164 x 125 x 50 mm

MOVEMENT

1.36 movement.
1 tune of 31 seconds.
36-note comb.
More than 200 pins per cylinder.

TUNES

1738 Edelweiss
1855 The Magic Flute (Glockenspiel)
1885 Waltz of the Flowers
1898 Canon
1908 The Four Seasons
1915 Cats (Memory)
2187 Waltz N°1 (Jazz-Suite 2)
2189 Solveig's Song (Peer Gynt-Suite 2)
2192 Hungarian Dance N°1
2202 Strangers in the Night



AXA.36.2719.001

BOX

Pebble-shaped smoked paperweight

R. Rodgers
W. A. Mozart
P. I. Tchaïkovsky
J. Pachelbel
A. Vivaldi
A. L. Webber
D. Chostakovitch
E. Grieg
J. Brahms
F. Sinatra

Cocoon

Cocoon is a **pebble-shaped paperweight** for those who like **soft and round** shaped objects.

People can see the mechanical movement through the pebble and thus **contemplate the animated cylinder and comb**.

Cocoon is available with **a transparent or a smoked pebble**. It can also be developed on request with other colours (minimum quantities).

The manufacturing of *Cocoon* musical movement requires 3 months of cumulated work. **All main parts are manufactured and assembled by hand in Reuge workshops in Saint-Croix.**

Clients may choose from **ten melody selections**, from a variety of composers and compositions.

Easy to use :

- To wind the mechanical movement, turn the key clockwise (under the pebble).
- To start the music : pull the button which is under the pebble.
- To stop the music : push the same button and the music stops immediately.